


LS Aluminium Products



A watercolor illustration of a modern building with greenery and colorful bubbles. The building is depicted in a sketchy, artistic style with various plants and flowers growing on its facade and balconies. Four large, overlapping colored bubbles (pink, yellow, blue, and green) are positioned in the upper right quadrant of the image. Each bubble contains text describing a different business segment. The background features a soft, hazy landscape with a winding path and distant hills.

Energy Cables & Systems

LS Cable-setting the standards
in power solution business

Industrial Materials

Realizing a convenient future
with cutting-edge materials

Telecommunications

Providing cutting-edge,
innovative technologies for a
ubiquitous network

Integrated Modules & Cable Systems

Providing the best customized
cable solutions for
all environments

Total Solution Provider for Electric Power and Telecommunication Industries

LS Cable, the longtime de facto holding company of LS Group, officially transformed into a holding company in July of 2008. The company's operations now encompass a total solution for electric power and telecommunication industries.

The latest change in corporate structure comes as the company is accelerating efforts to improve management efficiency in rapidly expanding markets. The move also results from efforts to effect a more responsible and transparent management structure. Management is now prepared to take more aggressive action to enhance our businesses and to identify new growth engines. The holding company will take the lead in fostering new growth engines and in identifying lucrative investment opportunities, while the company's other business units will focus on improving management and on making operations more efficient. With the continued support of the holding company, LS Cable will spearhead efforts to strengthen our business expertise, corporate competitiveness and management.

Toward the Global Leading Cable Company

In August of 2008 LS Cable acquired Superior Essex, North America's largest cable company, making LS Cable the third-largest player in the global cable industry. Superior Essex's flagship line of magnet wires and telecommunication cables further strengthened LS Cable's product lineup, which had focused on power cables, fiber optic cables and industrial materials. Superior Essex's extensive North America and European production and distribution networks will help LS Cable cement a presence in the region and bring the company one step closer to becoming a full-fledged global enterprise.

Superior Essex

Superior Essex Inc., a FORTUNE 1,000 company, is one of the largest wire and cable manufacturers in the world. The company manufactures and supplies a broad portfolio of wire and cable products for the communications, energy, automotive, industrial, and commercial & residential end-markets. It is a leading manufacturer of magnet wire, fabricated insulation products, and copper and fiber optic communications wire and cable. It is also a leading distributor of magnet wire, insulation and related products.



LS Cable

Korea's foremost cable maker in both product list and service range, LS Cable has an integrated supply system from basic raw materials to ultrahigh voltage cables, optical fiber cables, system engineering and installation works. In non-cable sector as well, LS Cable flourishes as a top-rate supplier of information and communication networks, connectors, lead frames, industrial rubber, and aluminum products. Reputed for its outstanding technology and quality, LS Cable is at the service of customers within and outside Korea. Armed with the world's leading technology in electric power and optic fiber, it has been successful with four joint ventures in Malaysia and Vietnam. It has thus demonstrated leadership in establishing a global network in the domains of electric power, other energy and information.



LS Aluminium Products





What is LS Cable Aluminium?

LS Cable aluminium is light and non-toxic and possesses good low temperature strength properties. It also has vacuum, heat, and electric conductivity properties.

It is made of environmentally friendly materials that can be easily processed or recycled.

When aluminium is alloyed with copper, manganese, zinc, nickel, magnesium, and silicon, its mechanical features can be greatly improved. Thus, demand for aluminium is expected to increase for electric, electronic, civil engineering, vehicle, shipbuilding and aerospace applications.



Contents

Automotive • Transport

Multi-port Extruded Tube & Precision Tube	10
Functional Multi-port Extruded Tube (Pre-flux Tube, Sil-flux Tube)	11
DURACOT®	12
Profiles	13

Material

Al-rod	15
Al-bar (High-Si)	16
AA6024	17

Certificates	18
--------------	----

Global Network	19
----------------	----

Automotive • Transport

Aluminium can save the fuel of transportation vehicle and simultaneously obtain heat exchange efficiency as heat exchanger parts, utilizing the light weight, high strength and high thermal conductivity of aluminium.

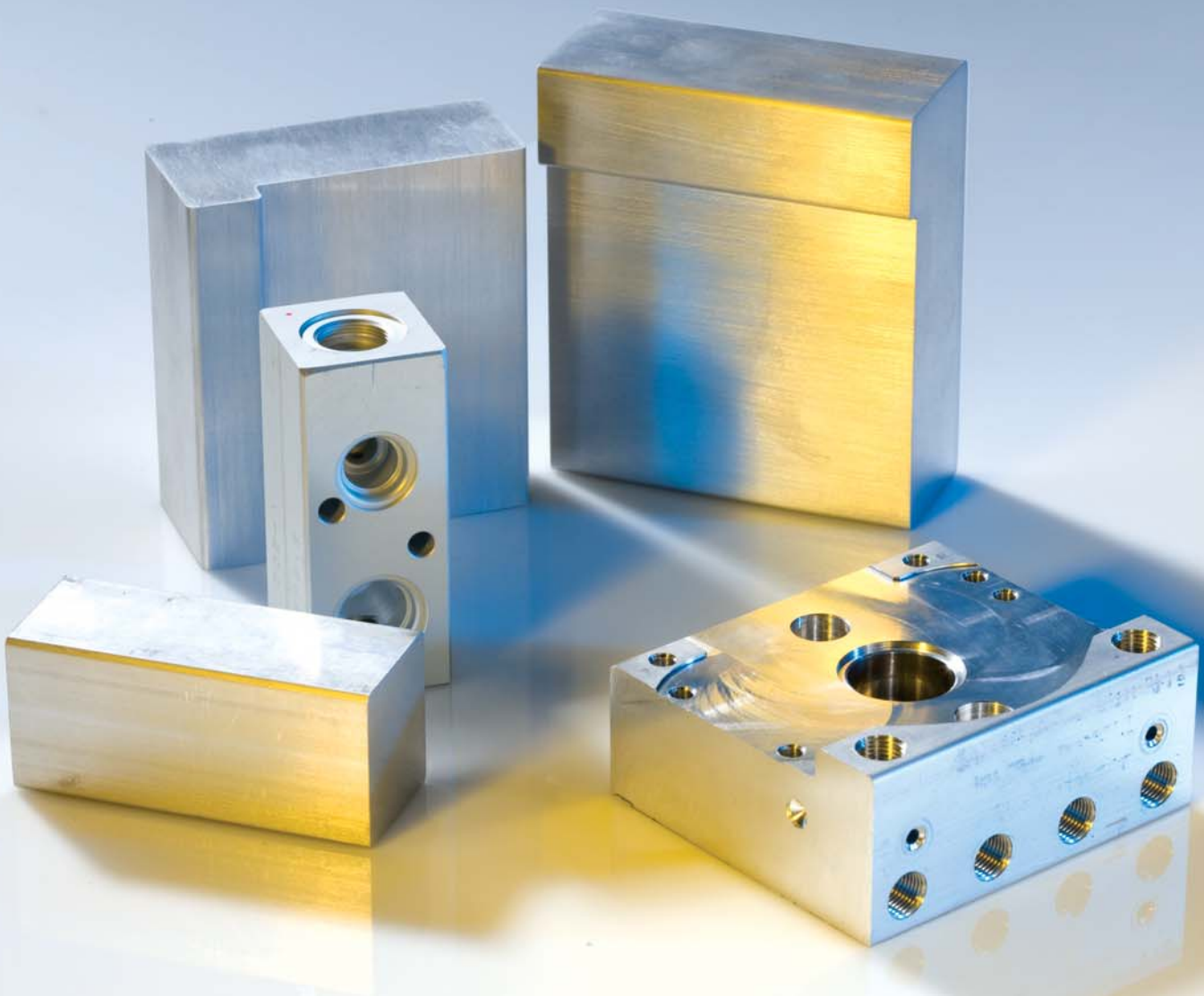
Product

Multi-port Extruded Tube

Precision Tube

DURACOT®

Profiles

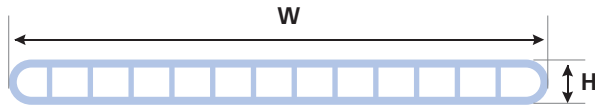


Automotive · Transport

Multi-port Extruded Tube & Precision Tube

Multi-port Extruded Tube

Cross Section



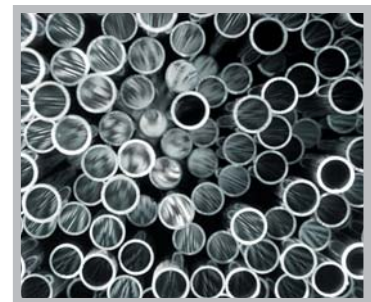
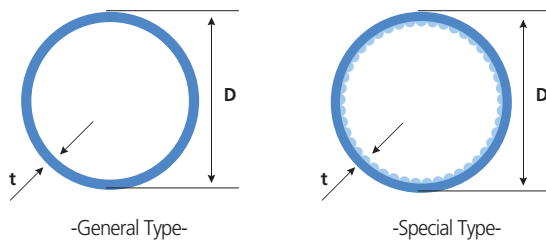
Dimension & Tolerance

Items	Dimension	Tolerance
Height (H)	1.0~4.0mm	± 0.02
Width (W)	10~38mm	± 0.02
Wall Thickness	Normal 0.5mm Min. 0.2mm	
Cutting Length	200~3,000mm	± 0.5

Application : Condenser, Evaporator, Radiator, Oil-cooler etc

Precision Tube

Cross Section



Dimension & Tolerance

Items	Dimension	Tolerance
Diameter(D)	4~22mm	± 0.05
Thickness(T)	0.5~1.8mm	± 0.05
Cutting Length	100~4,000mm	± 0.5

* Material: 1xxx, 3xxx, 6xxx.

Automotive · Transport

Functional Multi-port Extruded Tube (Pre-flux Tube, Sil-flux Tube)

Pre-flux Tube

Features

Coating Material	NOCOLOK Flux
Zn-spray	O/X
Fin	3-layer Clad Fin(4XXX / 3XXX / 4XXX)
Filler Metal	Clad Material(4XXX)
Benefit	- No need flux-spray process in brazing line - Easy to keep clean the brazing area



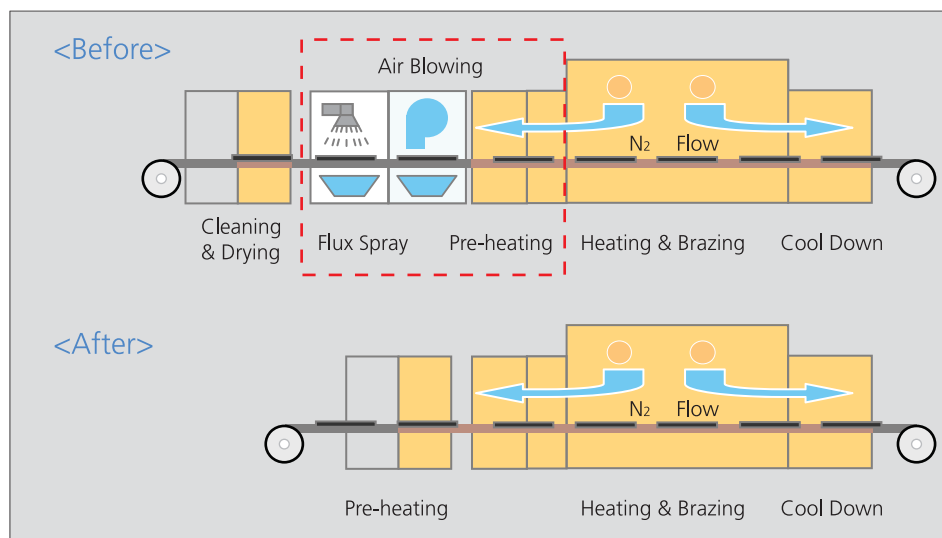
Sil-flux Tube

Features

Coating Material	Silicon Powder + NOCOLOK Flux
Zn-spray	O/X
Fin	Bare Fin(3xxx)
Filler Metal	Si-powder in the mixture
Benefit	- No need flux-spray process in brazing line - Only use bare fin instead of Al-Si clad fin - Save the material cost and processing cost(Using bare fin)



Brazing Process(Using Pre / Sil-flux Tube)



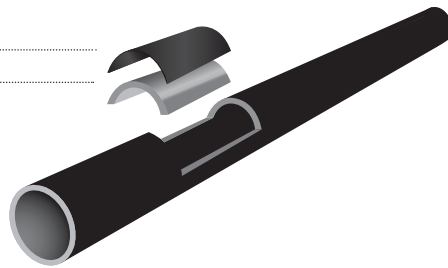
PA 12 Coated Aluminium Tube

Features

- Excellent resistance to salt corrosion
- Same work ability as for the Aluminium Tube without PA12 coating
- High cleanliness
- High resistance to stone chips
- High Durability
- Low weight and therefore lower fuel consumption
- Recyclable

Construction

- Polyamide 12 Coating
- Aluminium



Application

Tube Material

- Core : AA3003
- Coating : PA 12

Coating Colors

- Black

Tube Mechanical Properties

Property	Value
Tensile strength(N / mm ²)	105 ↑
Elongation(%)	15 ↑

Tube Cleanliness

All internal and external surface are free from foreign materials that might impair the performance.

Cut-to-length

- Length : 100 ~ 4,000 mm

Main dimension and tolerance of tube

- Outer diameter of tube : 4 ~ 22 mm
- Thickness of tube : 0.5 ~ 1.8 mm
- Coating thickness : 100 ~ 1,000 μm
- Tolerance : Accoding to KSD 6761



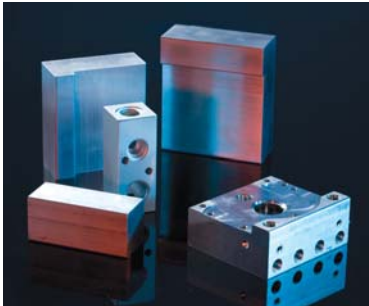
Al-Tube : A3003

Si	0.6 ↓
Fe	0.7 ↓
Cu	0.05 ~ 0.2
Mn	1.0 ~ 1.5
Zn	0.1 ↓
Others	0.15 ↓

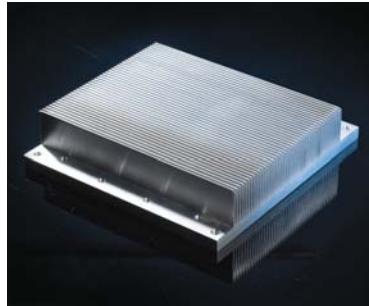
* Coating Material : Polyamide 12



Product



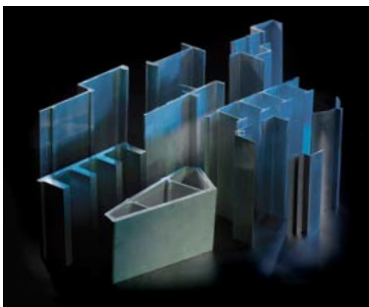
ABS & ESC Pump housing



Heat sink for HEV



Drive shaft bracket



Container profile



Truck side panel



Industrial profiles

We offer extruded aluminium profiles, semi-manufactured components, systems and finished products-meeting our customer's demands for performance, quality, precision and economy. Extrusion is the process that provides virtually unlimited opportunities for adapting product shapes. Costs are cut by using fewer components, which reduce the finishing process and simplify assembly. Customer satisfaction and product excellence are our key goals. Aluminium extrusions inspire creative designs and technical solutions that improve, simplify and reduce costs. At the initial stage, we work together with our customers on product development.

Material

The light weight, high strength and high wear-resistance of aluminium improves the working efficiency of high velocity rotating parts allowing them to be made even smaller. Aluminium is used for everything from automobile compressors to anything else requiring strength and light weight.

Product

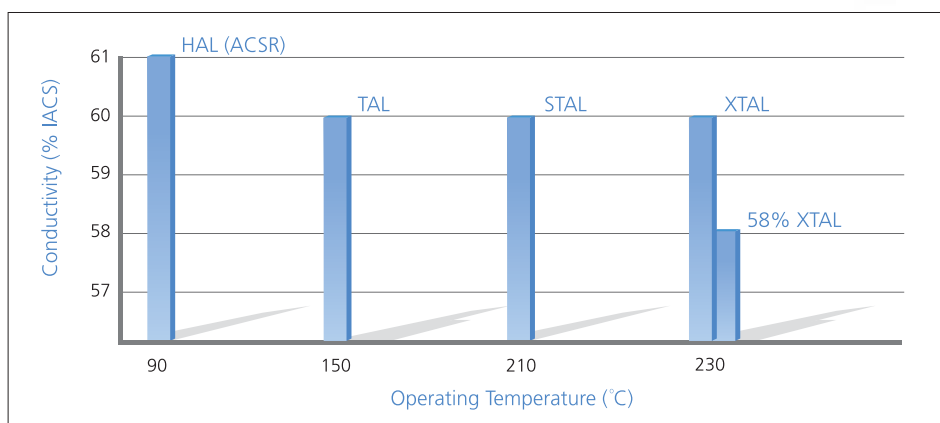
Al-rod	Al-bar(Hi-Si)	AA6024
--------	---------------	--------



Material Al-rod



Thermal Resistant Al-rod



Type	Application	UTS(Mpa)	Conductivity (% IACS)	Operating Temperature (Short time) / (°C)
HAL	ACSR	159 ~ 169 ↑	61.3 ↑	90 (120)
TAL	TACSR	159 ~ 169 ↑	60.0 ↑	150 (180)
STAL	STACIR	159 ~ 176 ↑	60.0 ↑	210 (240)
HITAL	HI-TACSR	225 ~ 238 ↑	55.0 ↑	150
XTAL	XTACIR	159 ~ 169 ↑	58.0 ↑ 60.0 ↑	230 (310)

High Capacity XTAL Alloy Lines

The first of its kind in the world, the main items of the XTAL alloy lines of a 60% level have world-class characteristics. This alloy is used for conductors for overhead power transmission lines that supply power from power plants to substations in suburban areas

Mother material for CONFORM® extrusion

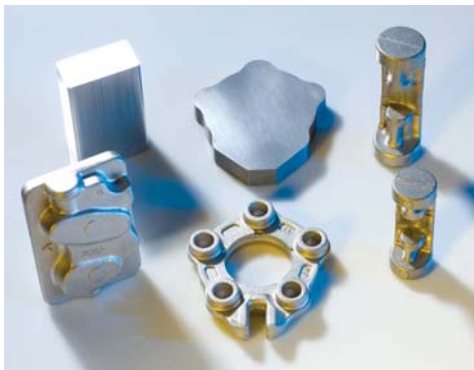
Alloy : AA1050, AA1070, AA1100, AA3003, LLA*™ (Mn,Cu)

*LLA : Long life alloy

Material

Al-bar(High-Si) for forging

Product



Forging Material & Final products

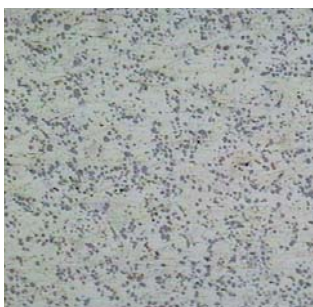


Al-bar

Chemical Composition

Alloy	Si	Fe	Cu	Mn	Mg	Cr	Zn	Ti	Ni	Other	Al
A4032	11.00~13.50	1.00 ↓	0.50~1.30	-	0.80~1.30	0.10 ↓	0.20 ↓	-	0.50~1.30	0.05 ↓	BAL
4000A	10.50~12.50	0.50 ↓	3.50~5.00	0.20 ↓	0.30~1.00	-	-	0.20 ↓	-	0.20 ↓	BAL
AP2X	11.00~12.50	0.20~0.30	4.00~4.60	0.20~0.30	0.50~0.70	-	0.25 ↓	0.30 ↓	-	0.20 ↓	BAL
A332	8.50~10.50	1.20 ↓	2.00~4.00	0.50 ↓	0.50~1.50	-	1.00 ↓	0.25 ↓	0.50 ↓	0.50 ↓	BAL

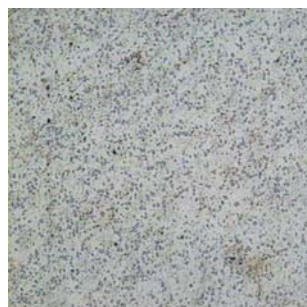
Micro-structure



A4032



AP2X



4000A

Application

- Swash Plate
- Socket Plate
- Piston Rod
- Suction & Discharge
- Clutch Piston

Material

Aluminum Alloy 6024

LS Aluminum, a leading company for the development of new Al alloy, has developed 6024 which is much stronger alloy than conventional 6061 Al alloy in the ways of LS's own.

Corrosion Resistance

Excellent Corrosion Resistance → The lowest cost of maintenance

Strength

Strength ~40% higher than 6061 Al alloy

Impact Resistance

Excellent Impact Resistance → The safety is much more improved

6024 Alloy

The 6024, adding Cu, Mn in Al-Mg-Si alloy, is more definitely superior than 6000 alloy.

Chemical Composition

Materials	Si	Fe	Cu	Mn	Mg	Zn	Ti	Cr	N	Other
6061	0.4~0.8	0.7 ↓	0.15~0.4	0.15 ↓	0.8~1.2	0.25 ↓	0.15 ↓	0.04~0.35	-	-
6024	0.7~1.3	0.05~0.7	0.3~0.9	0.6~1.2	0.3~1.0	0.2 ↓	0.1 ↓	-	-	-

Mechanical Properties

Materials	Tensile Strength		Yield Strength		Elongation		Fatigue Property		Impact Resistance	
		(kg / mm ²)		(kg / mm ²)		%	Δ(Threshold)	m		J
SS 400 (SS41)		41 ~ 52		25 ~		21	-	-		-
SUS 316		41 ~ 53		20 ~ 28		20 ~ 40	-	-		-
6061	T4	18 ↑		11 ↑		16 ↑	-	-		43.9
	T6	27 ↑		25 ↑		8 ↑	9.64	1.32		16.7
6024	T4	31 ~ 35		23 ~ 26		8 ↑	9.6 ~ 10.8	2.04 ~ 2.8		47.1
	T6	38 ~ 43		33 ~ 41		8 ↑	10.5 ~ 11.0	0.89 ~ 1.30		30.8

Material Properties

Materials	Tensile Strength	Corrosion Resistance	Weldability	Machinability	Microstructure
STEEL	100	D	A, B	B	-
6061	75	B	A, B	C	B, C
6024	~ 100	B	A, B	B	A

Certificates

UNDERWRITERS LABORATORIES INC.
ENVIRONMENTAL MANAGEMENT SYSTEM REGISTRATION

ISO 14001

LS Cable Ltd.
Gumi Plant
190 Gondan-Dong
Gumi-Si
Gyeongsangbuk-Do, 730-708
Korea

Indong Plant
643 Jinpyeong-Dong
Gumi-Si
Gyeongsangbuk-Do, 730-735
Korea

Underwriters Laboratories Inc. (UL) issues this certificate to the Firm named above, after assessing the Firm's environmental management system and finding it in compliance with:

ISO 14001:2004
ENVIRONMENTAL MANAGEMENT SYSTEM
KS A 14001:2004

for the following scope of registration:

The environmental management system of LS Cable Ltd. associated with the design and manufacture of copper and optical fiber telecommunication cables, power cable, power cable accessories, aluminum extruded products, UC(Ultracapacitor) and rubber hoses and assemblies for automotive application and manufacture of magnet wires, communication cables (LAN), optical fibers, curtain walls, aluminum billet and rods, aluminum tubes and copper rods at Gumi and Indong Plants, Gumi-Si, Gyeongsangbuk-Do, Korea.

This environmental management system registration is included in UL's Directory of Registered Firms and applies to the operations of the addressee(s) shown above. By issuance of this certificate the firm represents that it will maintain its registration in accordance with the applicable requirements. This certificate is not transferable and remains the property of Underwriters Laboratories Inc. ®.

File Number: A5120
Volume: 1
Original Certification Date: January 30, 1997
ISO 14001:2004 Issue Date: September 6, 2005
Revision Date: September 3, 2007
Recertification Date: January 30, 2008
Renewal Date: January 29, 2011

John H. Schmidt
John H. Schmidt
Senior Vice President, Chief Development Officer

UL
REGISTERED FIRM

UNDERWRITERS LABORATORIES INC.
CERTIFICATE OF REGISTRATION

LS Cable Ltd.
Indong Plant
643 Jinpyeong-Dong
Gumi-Si
Gyeongsangbuk-Do
730-360 Korea

Gumi Plant
190 Gongdan-Dong
Gumi-Si
Gyeongsangbuk-Do,
730-030 Korea

Underwriters Laboratories Inc. (UL) issues this certificate to the Firm named above, after assessing the Firm's occupational health and safety management system and finding it in compliance with:

OHSAS 18001:1999
OCCUPATIONAL HEALTH AND SAFETY MANAGEMENT SYSTEM

for the following scope of the Conformance Assessment:

The occupational safety and health management system of LS Cable Ltd. associated with the design and manufacture of copper and optical fiber telecommunication cables, power cables, power cable accessories, aluminum extruded products, UC(Ultracapacitor) and rubber hoses and assemblies for automotive application and manufacture of magnet wires, communication cables(LAN), optical fibers, curtain walls, aluminum billet and rods, aluminum tubes and copper rods at Indong and Gumi Plants, Gumi, Korea to the requirements of OHSAS 18001.

This occupational health and safety management system certificate applies to the operations of the addressee(s) shown above. By issuance of this certificate the firm represents that it will maintain its system in accordance with the applicable requirements. This certificate is not transferable and remains the property of Underwriters Laboratories Inc. ®.

File Number: A13352
Volume: 1
Original Certification Date: September 7, 2004
ISO 18001 Issue Date: September 7, 2004
Revision Date: September 3, 2007
Recertification Date: September 7, 2007
Renewal Date: September 6, 2010

John H. Schmidt
John H. Schmidt
Senior Vice President, Chief Development Officer

UL
REGISTERED FIRM

UNDERWRITERS LABORATORIES INC.
CERTIFICATE OF REGISTRATION

LS Cable Ltd.
Indong Plant
643 Jinpyeong-Dong
Gumi-Si
Gyeongbuk 730-360 Korea

With remote supporting functions at:
19F ASEMI Tower Anyang Plant
15F Samsung-Dong 555 Myeong-Dong
Gangnam-Gu Dongan-Gu Anyang-Si
Seoul, 152-090 Korea Gyeonggi-Do 431-831 Korea

Underwriters Laboratories Inc. (UL) issues this certificate to the Firm named above (and where applicable in the annexes) to this certificate, after assessing the Firm's quality system and finding it in compliance with:

ISO/TS 16949: 2002

for the following scope of registration:

3052 (US) : Rubber and Plastic Hose and Belting 3714 (US) : Motor Vehicle Parts and Accessories
3365 (US) : Aluminum Foundries 3365 (US) : Aluminum Rolling and Drawing, Not Elsewhere Classified
3364 (US) : Aluminum Extruded Products 3448 (US) : Miscellaneous Structural Metal Work
3429 (US) : Electrical Industrial Apparatus, Not Elsewhere Classified

The design and manufacture of rubber hoses and assemblies. The manufacture of aluminum micro, multi-port and round tubes and aluminum-alloyed bars and rods. The remote location at Anyang Plant performs internal audit, management review and document control as a corporate function. The remote location at Anyang Plant performs product design of ultra capacitors as a corporate function. The remote location at Gangnam-Gu, Seoul performs the following primary functions: overseas sales.


This quality system registration is included in UL's Directory of Registered Firms and applies to the provision of goods and/or services as specified in the scope of registration from the addressee(s) shown above. By issuance of this certificate the firm represents that it will maintain its registration in accordance with the applicable requirements. This certificate is not transferable and remains the property of Underwriters Laboratories Inc. ®.

Certificate File Number: A6891-02 Volume: 1 of 2
Page 2 of 4
Original Issue Date: December 7, 2004
ISO/TS 16949:2002 Issue Date: December 7, 2004
Revision Date: December 5, 2007
Recertification Date: December 5, 2007
Renewal Date: December 4, 2010

John H. Schmidt
John H. Schmidt
Senior Vice President, Chief Development Officer

UL
REGISTERED FIRM

Certificate Number: 000524

The Aluminum Association 

950 19th St., N.W.
Washington, D.C. 20005 Phone (202) 862-6100
Fax (202) 462-6194 Website www.aluminum.org

April 9, 2002

TO: Signatories of the Declaration of Accord - Wrought

RE: International Registration of a New International Alloy Designation 6024

Ladies and Gentlemen:

Since there were no objections, alloy designation 6024 with the following chemical composition limits is assigned for international registration.

REGISTERED BY: Korea

REGISTRATION DATE: 2001 November 20

REGISTERED COMPOSITION LIMITS - Alloy 6024

Silicon	0.7-1.3
Iron	0.05-0.7
Copper	0.30-0.9
Manganese	0.30-1.2
Magnesium	0.30-1.0
Chromium	0.20
Zinc	0.20
Titanium	0.20
Others, Each	0.05
Others, Total	0.15
Aluminum	Remainder

DENSITY:
U.S. Customary 0.089 lbs/in³
Metric 2.72 kg/m³ × 10³

APPLICATION This alloy has been developed by the registrant as extrusions for use mainly in structural applications.

Sincerely,
P. Parvaneh
Parvaneh Shafiee
Manager, Alloy and Temper Registrations

Global Network

Branches

Singapore Office

300 Beach Road #25-07 The Concourse Singapore 199555
Tel. +65-6342-9162~3

Dubai Office

#502 Capricorn Tower, Sheikh Zayed Road P.O.Box 113798 Dubai, U.A.E
Tel. +971-4-332-9445

India Office

New Delhi Office

C-1, 3rd Fl. Community Centre (Opp. I.I.T Gate) Safdarjung Development Area,
New Delhi, 110016 India
Tel. +91-11-4602-1657,1658

Mumbai Office

#209, 2nd Fl. Dynasty, "A" Wing, Andheri-Kurla Road, Mumbai, 400069 India
Tel. +91-22-4030-9525

Bangalore Office

#111, 1st Floor B Tower, Millenia Towers, Ulsoor, Bangalore, 560008 India
Tel. +91-80-4022-4053

Moscow Office

Park Place E-711, 113/1, Leninsky Prospect, Moscow, 117198 Russia
Tel. +7-495-956-5814

Riyadh Office

#7, 2nd Fl. Al-Rayes Bulding, In Olaya Steet B/D No.28, Riyadh, Saudi Arabia
Tel. +966-1-201-3515

Sao Paulo Office

11th Fl. Itavera Building, Rua Arandu, 1544 Conj 111 e 112 Brookline Paulista,
Sao Paulo, SP, Brazil, 04562-031
Tel. +55-11-2872-4838

Jakarta Office

Graha Mustika Ratu, 11th Floor, Jl.Jenderal Gatot Subroto Kav.74-75,
Jakarta Selatan 12870, Indonesia
Tel. +62-21-830-6733

Cairo Office

Flat No.36, El-Zeini Tower, 25 Misr Helwan Road, Maadi, Cairo, Egypt
Tel. +20-19-966-2810

Sydney Office

Level 35, Suite 35.02 Northpoint 100 Miller Street North Sydney NSW 2060
Tel. +61-043-865-9066

Subsidiaries

LSCW(Wuxi)

LS Industrial Park, Xin Mei Rd, National High-tech Industrial Development Zone.
Wuxi, Jiangsu Province, 214028 China
Tel. +86-510-8534-5943

LSCT(Tianjin)

East of Jing-jin, Express, Yixingbu Entrance, Beichen, Tianjin, China
Tel. +86-22-2699-7618

LSIC

Shanghai, China HQ

12th Fl. Huamin Empire Plaza, 726 West Yan'an Rd, Shanghai 200050, China
Tel. +86-21-5237-3399

Beijing

#02 B-17th Fl. Global Trade Center, 36 Beisanhuan-Dong Rd. Dongcheng Dt.,
Beijing, China
Tel. +86-10-5825-6011

Shenyang

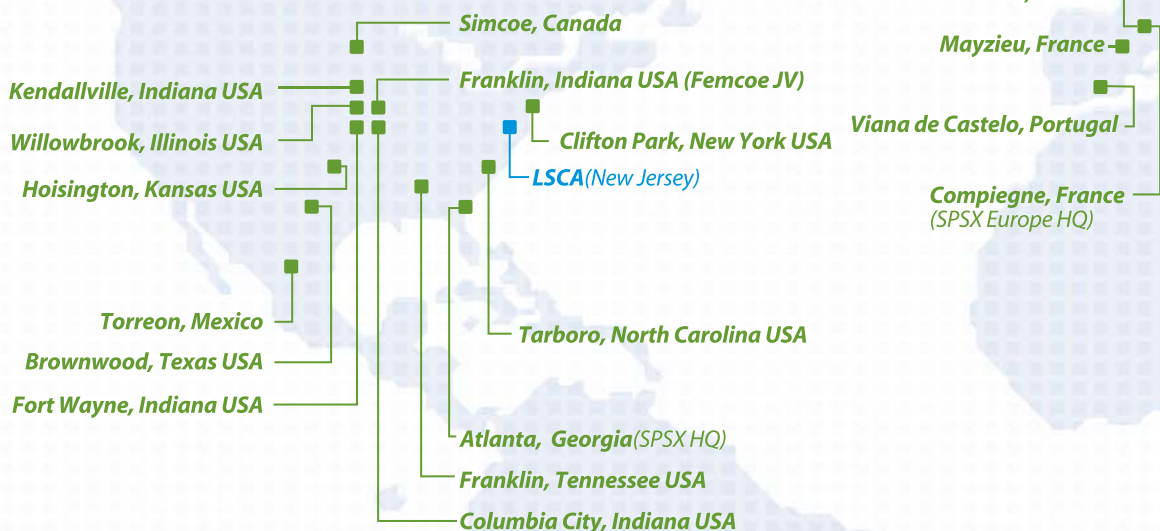
Room B, 15th Fl. XinGangAo Building, 51 Beizhan Rd. Shenhe Dt. Shenyang
110013 China
Tel. +86-24-2256-6541

Shenzhen

#611-612, 6013 Shennan Rd. Futian Dt. Shenzhen, China
Tel. +86-755-8275-0470

Chendu

#2606, 26th Fl. CCB Sichuan Building, 88 Ti Du Street, Chengdu 610017 China
Tel. +86-28-8676-7951





Korea Operations

Headquarters

LS Tower 1026-6 Hogye-dong, Dongan-gu, Anyang, Gyeonggi-do 431-830 Korea
Tel. +82-2-2189-9114

Anyang Plant

555 Hogye-dong, Dongan-gu, Anyang, Gyeonggi-do 431-830 Korea
Tel. +82-31-428-4114

Gumi Plant

190 Gongdan-dong, Gumi, Gyeongsangbuk-do 730-708 Korea
Tel. +82-54-469-7114

Indong Plant

643 Jinpyeong-dong, Gumi, Gyeongsangbuk-do 730-735 Korea
Tel. +82-54-469-7763

Donghae Plant

1377 Songjeong-dong, Donghae, Gangwon-do 240-806 Korea
Tel. +82-33-820-3114

R&D Center

555 Hogye-dong, Dongan-gu, Anyang, Gyeonggi-do 431-830 Korea
Tel. +82-31-450-8114



LS-VINA(Haiphong)

South of Binh Bridge Str. So Dau Precinct, Hong Bang Dt, Haiphong, Vietnam
Tel. +84-31-540750

LSCV(Hochiminh)

Nhon Trach II-Lockhang IZ, Nhon Trach Dt, Dong Nai province, Hochiminh, Vietnam
Tel. +84-61-356-9037

LSCM(Penang)

Lot 1192, Mukim 14, Permatang Tinggi, 1400 Bukit Mertajam, Penang, Malaysia
Tel. +60-4-588-9609(Ext.34)

LSCI(Haryana)

#101, 1st Floor, Park Centra, Sector 30, Gurgaon, Haryana 122 002, India
Tel. +91-11-2612-1992

LSCA(New Jersey)

920 Sylvan Avenue, Englewood Cliffs, NJ 07632, USA
Tel. +1-201-816-2253

LSCU(London)

#109, Building 3, Chiswick Business Park 566 Chiswick High Rd.,
London, W4 5YA, UK
Tel. +44-20-8899-6671

LSCJ(Tokyo)

E 16th Fl. Akasaka Twin Tower 17-22, 2-Chome Akasaka, Minato-ku, Japan
Tel. +81-3-3582-9129

■ Moscow Office

■ Bramsche, Germany

■ Arolsen, Germany

■ Quattordio, Italy (2 Facilities)

■ Cairo Office

■ Dubai Office

■ Riyadh Office

■ LSCI(Haryana)

■ New Delhi Office

■ Mumbai Office

■ Bangalore Office

■ LS-VINA(Haiphong)

■ LSCV(Hochiminh)

■ LSCM(Penang)

■ Singapore Office

■ Jakarta Office

■ Sydney Office

- LS Cable Branches
- LS Cable Subsidiaries
- Superior Essex
- LS HongQi Cable

Always with Our Customers

LS Cable



Head Office

14F, LS Tower, 1026-6, Hoge-dong, Dongan-gu, Anyang-si, Gyeonggi-do, 431-080, Korea
Tel. +82-2-2189-9114 Fax. +82-2-2189-9379

Factory

643 Jinpyeong-dong, Gumi-si, Gyeongsangbuk-do, 730-735, Korea
Tel. +82-54-469-7814 Fax. +82-54-469-7707

©2009 LS Cable, Ltd. All right reserved. This product or document is protected by copyright and distributed under licenses restricting its use, copying, distribution, and decompilation.
No part of this product or document may be reproduced in any form by any means without prior written authorization of LS Cable and its licensors, if any.
Products shown on this catalog are subject to change without any prior notice.